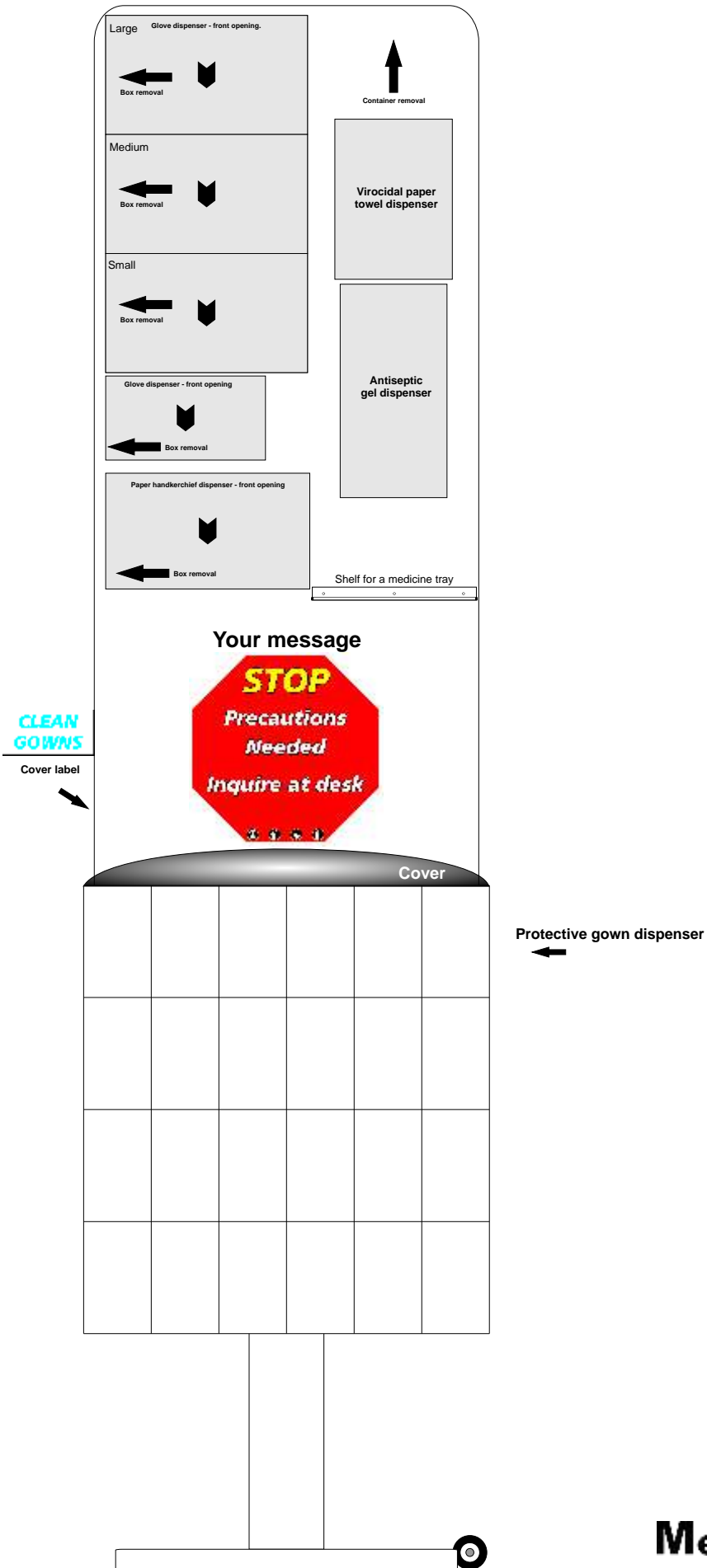


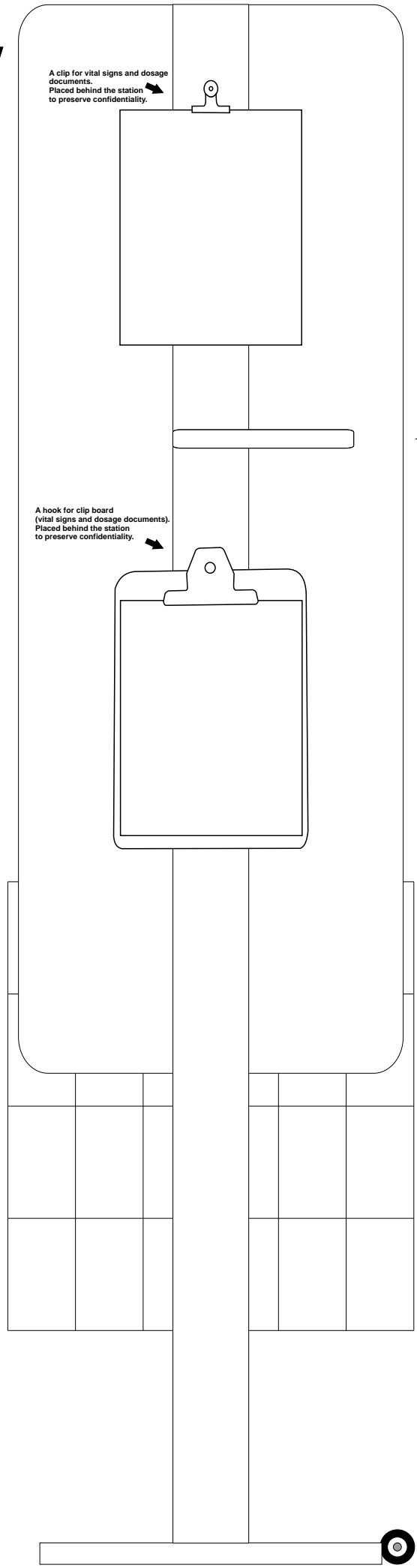
Isolation Unit model "ISO"



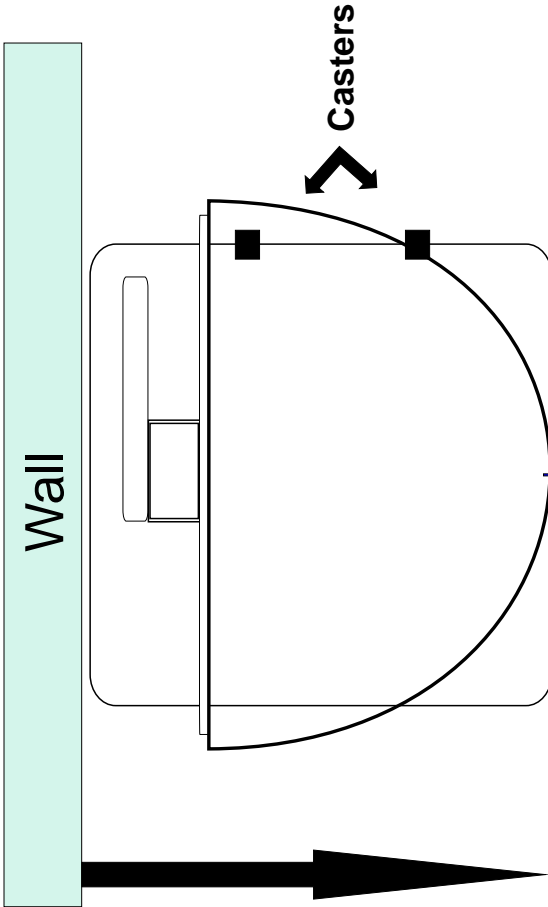
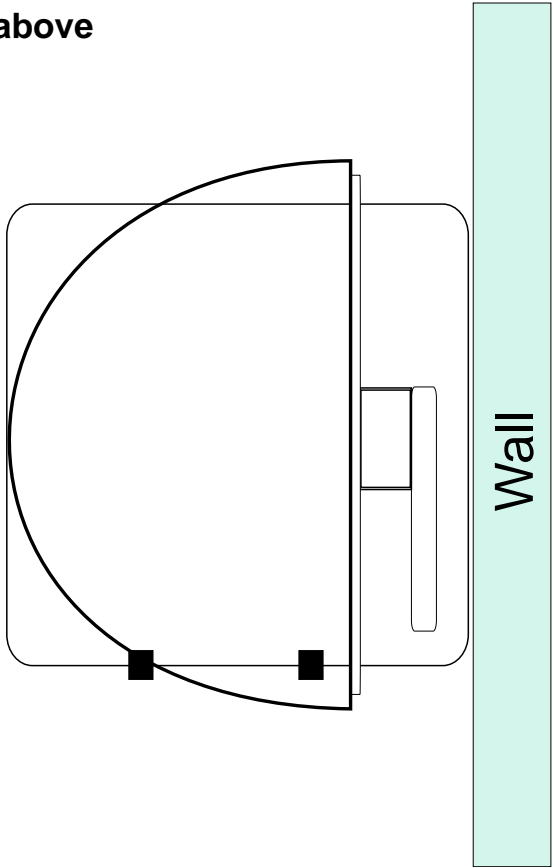
Control of tilt for mobility

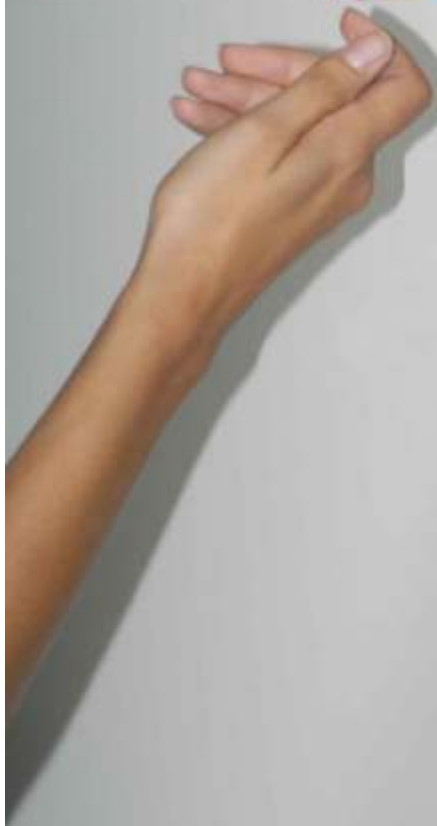


Rear view



View from above





Isolation Unit model "ISO" Isolation room

This unit is designed for moving items required to protect the patient, as well as staff and visitors.

The unit can be placed in the corridor near the door of an isolation room.

Its casters enable the unit to be tilted and moved easily from one room to another.

The unit may contain:

An antiseptic gel dispenser (as used in your establishment)

Three boxes of gloves (small, medium and large) measuring 5¼" high x 9" long x 3¾" deep

A box of masks: 4¼" high x 5¾" long x 4" deep

A 5" deep box of standard virocidal wipes

A box of paper handkerchiefs: 5" high x 7½" long x 2¼" deep

A full-size bag for clean or disposable jackets: 21" high x 18½" long x 11" deep.

A clip for vital signs and dosage documents.

A hook for clip board (vital signs and dosage documents).

Placed behind the station to preserve confidentiality.

A shelf for medicine tray

The unit also includes:

All associated units (see illustration),

An octagonal poster printed with your logo and your own message

A magnetized plaque marked "isolation" to be placed on the door frame of the isolation room.

The unit may be customized as required to accept any kind of product or other accessories.

The isolation unit model "ISO" has been designed on the same lines as the very popular model "B".

Specification

Straight steel pole 12G (2,54 mm); height : 6ft (183cm)

Dimension : 3 x 1,3in (7.6 x 3.2 cm)

Secured with a continuous circumferential weld providing excellent strength and integrity at the base

Mobile Base

1" carbon steel base plate (78lbs)

Dimension : 15,7 x 15,7in (40 x 40cm) with rounded corners

4 scratch proof rubber soles (2" in diameter)

2 rubber wheels : 2,6in (6.7cm) in diameter mounted on one side of the steel base providing effortless manoeuvring of display stand.

Total weight 100 lbs (43,2 kg)

All steel surfaces are finished with an electrostatically applied, thermally cured, thermosensitive polymer powder coat to provide a glossy, white enamel finish resistant to corrosion and impacts.

Denis Sirois
Medic Acces
492 St-Georges
St-Jérôme, Québec, Canada
J7Z 5B3
TEL.: 450-602-1556
FAX.: 450-565-6820
info@medicacces.com
www.medicacces.com

