

Isolation Unit model "ISO"



Other configuration

Medic Acces
232 A rue Ste-Paule, St-Jérôme, Québec, Canada J7Z 1A8
Tél.: 450-592-3017 Télécopieur.: 450-592-1921
info@medicacces.com www.medicacces.com



Isolation Unit model "ISO" Isolation room

This unit designed for moving items required to protect the patient, as well as staff and visitors.

The unit is placed in the corridor near the door of an isolation room.

Its casters enable the unit to move easily from one room to another.

The unit may contain:

An antiseptic gel dispenser (as used in your establishment).

Three boxes of gloves (small, medium and large).

A box of masks.

Standard virocidal wipes.

A box of paper handkerchiefs.

A full-size bag for clean or disposable jackets.

A clip for vital signs and dosage documents.

A hook for clip board for vital signs and dosage documents.

Placed behind the station to preserve confidentiality.

A shelf for a medicine tray

The unit also includes:

All associated units.

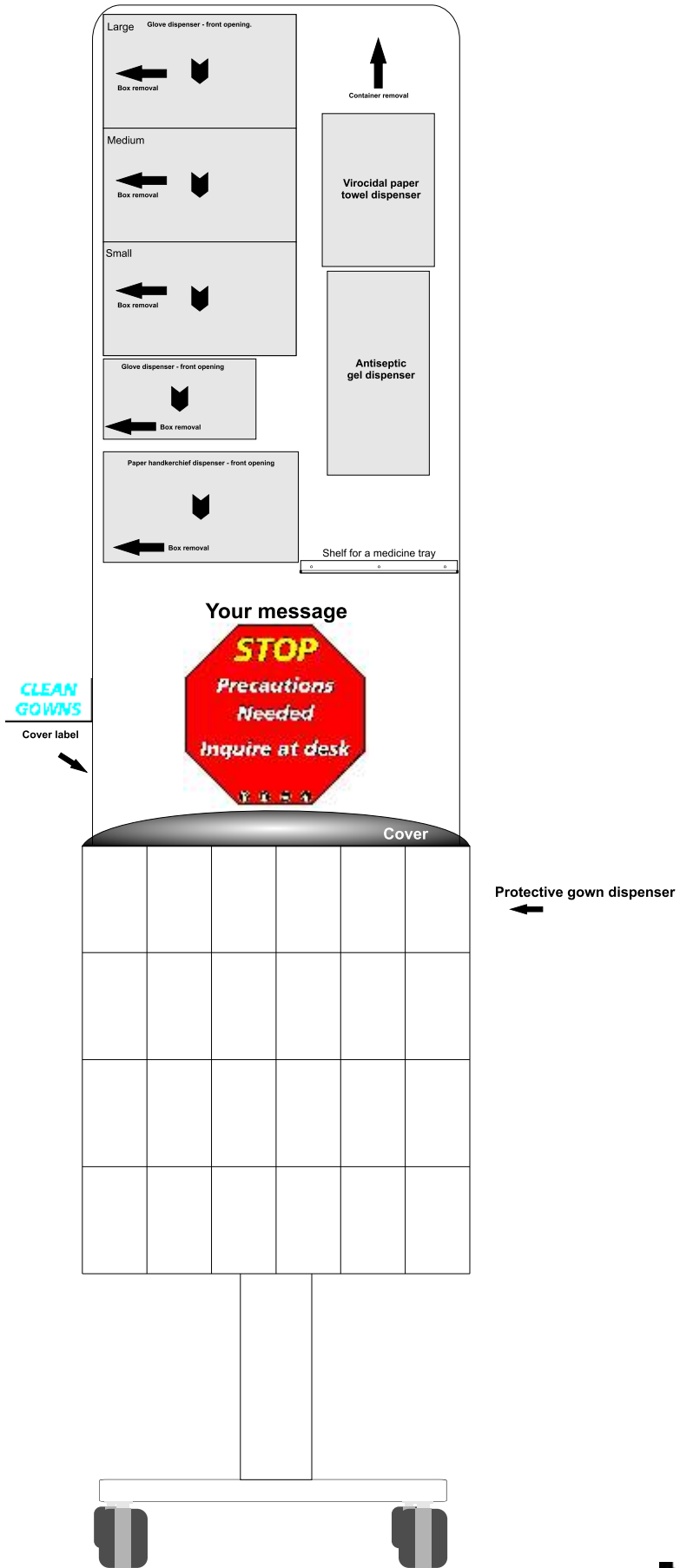
An octagonal poster printed with your logo and your own message.

A magnetized plaque marked "isolation" to be placed on the door frame of the isolation room.

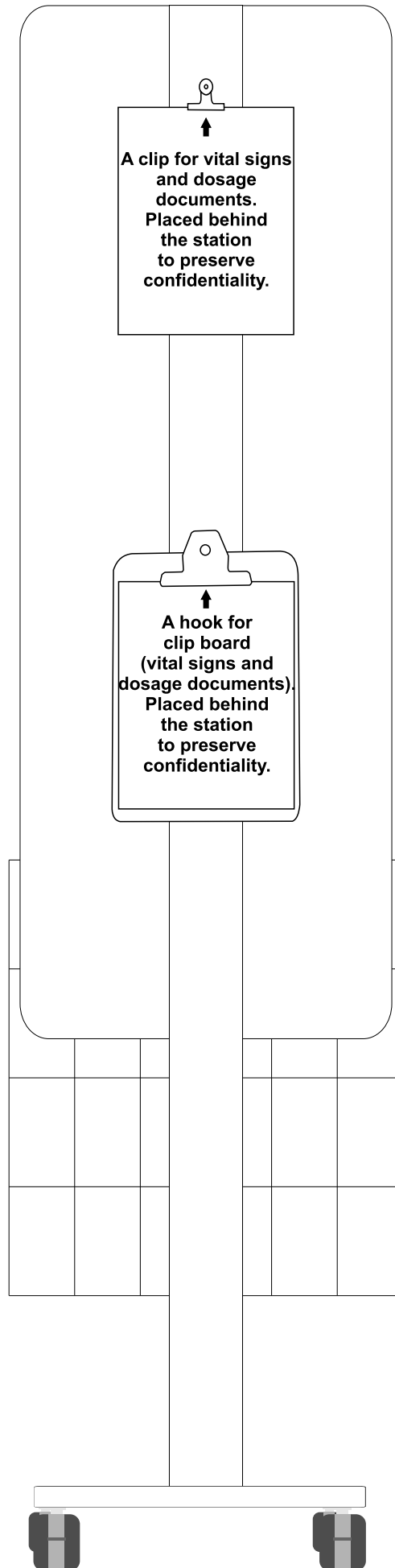
The unit may be customized as required to accept any kind of product or other accessories.

The isolation unit model "ISO" has been designed on the same lines as the very popular model "B".

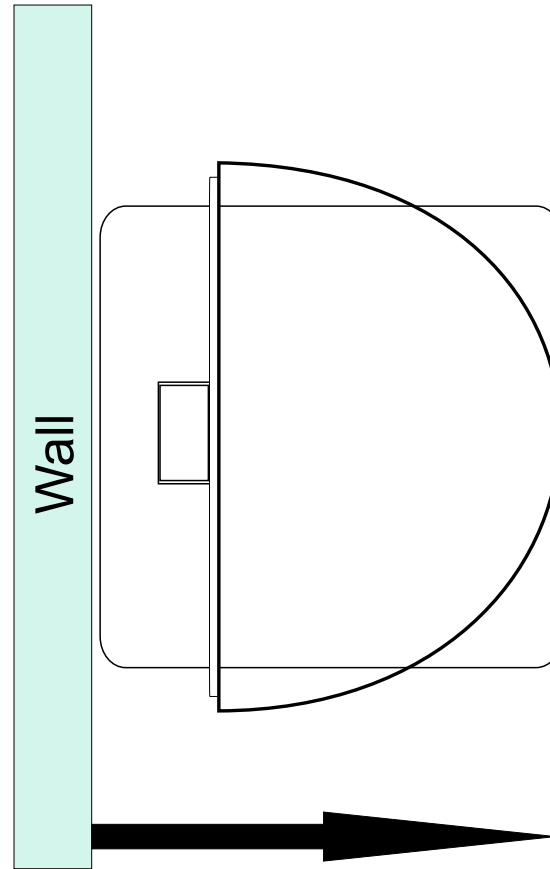
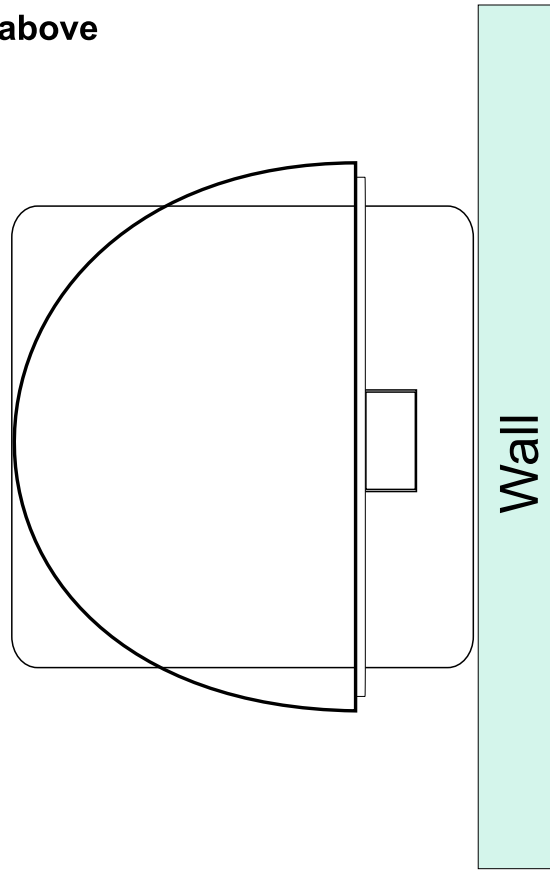
It takes up little space, only 16" in depth, and can easily stand against any wall of the corridor.



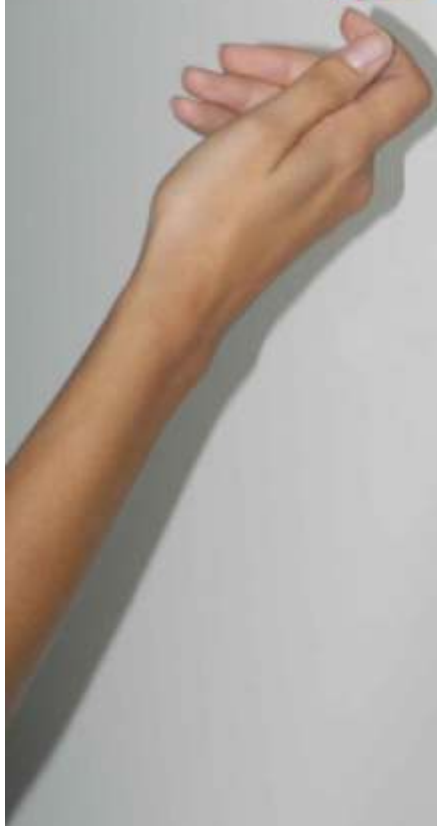
Rear view



View from above



16 inches



Specification

Straight steel pole 12G (2,54 mm); height : 6ft (183cm)

Dimension : 3 x 1,3in (7.6 x 3.2 cm)

Secured with a continuous circumferential weld providing excellent strength and integrity at the base

Mobile Base

1" carbon steel base plate (78lbs)

Dimension : 16 x 16in with rounded corners

4 rubber wheels 3in in diameter with lock,
providing effortless manoeuvring of display stand.

Total weight 100 lbs (43,2 kg)

All steel surfaces are finished with an electrostatically applied, thermally cured, thermosensitive polymer powder coat to provide a glossy, white enamel finish resistant to corrosion and impacts.

Denis Sirois

President

Medic Acces

232 A Ste-Paule

St-Jérôme, Québec, Canada

J7Z 1A8

TEL.: 450-592-3017

FAX.: 450-592-1921

Info@medicacces.com

www.medicacces.com

